

BALTIC®
INDUSTRIAL
LIFEJACKETS
SWEDEN



INDUSTRIAL, OFFSHORE AND SHIPPING
PRODUCT RANGE 2018

M.E.D./SOLAS LIFEJACKETS
TWO YEARS GUARANTEE

M.E.D./SOLAS
EN ISO 12401



M.E.D./SOLAS approved inflatable lifejackets for demanding industrial use. Double safety through twin chambers. The lifejackets must be equipped with lifejacket lights – various models are available.



ART NO 1802
1812 WITH SAFETY HARNESS



ART NO 1803
1813 WITH SAFETY HARNESS



ART NO 1804
1814 WITH SAFETY HARNESS



ART NO 1801
1811 WITH SAFETY HARNESS

LEGEND 165 M.E.D./SOLAS
TESTED AND APPROVED TO M.E.D./SOLAS MSC 200 (80)

The series of Baltic SOLAS lifejacket for work with comfort available with fabric or wipe clean PVC cover. The design features larger neck opening soft collar, Baltic unique head support and tailored to ensure a close fit with minimal bulk. Standard features include quick lock buckle, crutch straps, lifting becket and buddyline. Optional extras are lifejacket light, sprayhood, protective covers, AIS and PLB. Products with integrated safety harnesses are approved to EN ISO 12401 and has a non-magnetic stainless steel interlocking front buckle. Rearming kit – 2433 and 2520.

ALSO
AVAILABLE
WITH
HAMMAR
VALVE

SIZE 43+ kg

M.E.D./SOLAS LIFEJACKETS
TWO YEARS GUARANTEE

M.E.D./SOLAS
EN ISO 12401



ART NO 2802
2812 WITH SAFETY HARNESS



ART NO 2803
2813 WITH SAFETY HARNESS



ART NO 2804
2814 WITH SAFETY HARNESS



ART NO 2801
2811 WITH SAFETY HARNESS

LEGEND 305 M.E.D./SOLAS
TESTED AND APPROVED TO M.E.D./SOLAS MSC 200 (80)

The series of Baltic SOLAS lifejacket for work with comfort available with fabric or wipe clean PVC cover. The design features larger neck opening soft collar, Baltic unique head support and tailored to ensure a close fit with minimal bulk. Standard features include quick lock buckle, crutch straps, lifting becket and buddyline. Optional extras are lifejacket light, sprayhood, protective covers, AIS and PLB. Products with integrated safety harnesses are approved to EN ISO 12401 and has a non-magnetic stainless steel interlocking front buckle. Rearming kit – 2460 and 2520

ALSO
AVAILABLE
WITH
HAMMAR
VALVE

SIZE 43+ kg

M.E.D./SOLAS LIFEJACKETS
TWO YEARS GUARANTEE

M.E.D./SOLAS
EN ISO 12401



M.E.D./SOLAS approved inflatable lifejackets for demanding industrial use. Double safety through twin chambers. The lifejackets must be equipped with lifejacket lights – various models are available.



WIND MILL AUTO
ART NO 2816

SIZE 43+ kg

WIND MILL 305 M.E.D./SOLAS
TESTED AND APPROVED TO M.E.D./SOLAS MSC 200 (80)

The Baltic Wind Mill SOLAS lifejacket is designed for the commercial environment allowing the wearer to work in comfort. The design features larger neck opening and soft collar. The EN ISO 12401 safety harness is designed to fit a fall arrest harness. Non-magnetic stainless steel interlocking front buckle. Detachable twin crutch straps. Buddy line. Zipped radio pocket. 2 card holders. Attachment points for light, AIS and spray hood. Lifting becket, whistle. Reflective patches on the cover. Buoyancy: 305N. Optional extras are safety light, spray hood, protective covers. Rearming kit: 2520 and 2460.

INFLATABLE LIFEJACKETS
TWO YEARS GUARANTEE

EN ISO 12402-3
EN ISO 12401



ARGUS PRO 165
AUTO
ART NO 1890

SIZE 40-150 kg



ARGUS PRO 165
AUTO
ART NO 1891



ARGUS PRO 165
AUTO
ART NO 1892



ARGUS PRO 165
AUTO HARNESS
ART NO 1870



ARGUS PRO 165
AUTO HARNESS
ART NO 1871



ARGUS PRO 165
AUTO HARNESS
ART NO 1872

ARGUS PRO 165
This vest is based on our well-known Winner model with an inspection window fitted so that you can visually check the two indicators of the automatic valve are showing green and that the lifejacket is ready for use. Fitted with a detachable crutch strap and a zipped pocket for mobile phone, keys or wallet. Buoyancy 165N. Also available with integrated safety harness, approved to EN ISO 12401.

INFLATABLE LIFEJACKETS
TWO YEARS GUARANTEE

Inflatable lifejackets with durable PVC cover; very resistant to fish oils, industrial oils, mould, UV-light, heavy abrasion etc.

EN ISO 12402-3
EN ISO 12402-8



SIZE 40-150 kg

AUTO
ART NO 1510



STL/SIZE 40-150 kg

AUTO
ART NO 1512

INDUSTRIAL 165 ARGUS

The Industrial 165 comes with a durable soft PVC outer cover, providing very high resistance to fish oil, industrial oil, mould, UV-light, heavy abrasion etc. Developed for the professional fisherman or for use when an extra durable life-jacket with automatic inflation is needed. Easy re-closing by a way of a Delrin zip. Other features are retro reflective patches, lifting becket, detachable crutch strap and attachment point for sprayhood. Automatic cartridge art no 2520. CO₂ cylinder: 33 g art no 2433. Optional accessories: sprayhood, lifejacket light.

FISHFARMER 165 ARGUS

This inflatable lifejacket comes with a durable soft PVC outer cover, providing very high resistance to fish oil, industrial oil, mould, UV-light, heavy abrasion etc. Developed for the professional fisherman or for use when an extra durable lifejacket and automatic inflation is needed. Easy re-closing by a way of a Delrin zip. Other features are retro reflective patches, lifting becket, removable pocket to store a knife and a removable holder for VHF radio, detachable crutch strap and attachment point for sprayhood. Automatic cartridge art no 2520. CO₂ cylinder: 33 g art no 2433. Accessories: sprayhood, lifejacket light.

INFLATABLE LIFEJACKETS
TWO YEARS GUARANTEE

EN ISO 12402-2
EN ISO 12401



SIZE 40-150 kg

ART NO
2860 – MANUAL WITH HARNESS
2880 – MANUAL
2870 – AUTOMATIC WITH HARNESS
2875 – AUTOMATIC WITH HARNESS SLA
2890 – AUTOMATIC



SIZE 40-150 kg

ART NO
2861 – MANUAL WITH HARNESS
2881 – MANUAL
2871 – AUTOMATIC WITH HARNESS
2876 – AUTOMATIC WITH HARNESS SLA
2891 – AUTOMATIC



SIZE 40-150 kg

ART NO
2882 – MANUAL
2872 – AUTOMATIC WITH HARNESS
2892 – AUTOMATIC

LEGEND 305

The Legends series of 305N lifejackets incorporating the fit and comfort of the Legend 165 plus when inflated the unique head support. Available with or without integrated safety harness approved to EN ISO 12401. Legend 305 also comes in a version called SLA meaning integrated M.E.D./SOLAS lifejacket light, sprayhood and attachment straps for AIS/PLB. Rearming kit 2460 and 2520

INFLATABLE LIFEJACKETS
FIVE YEARS GUARANTEE

EN ISO 12402-4



ART NO 1354



ART NO 1353

COMPACT 100 AUTO

The Compact is our newly developed 100N inflatable life-jacket which has a great fit and comfort. It has the same performance as the traditional foam filled orange lifejacket. The smaller lung makes it lighter and more comfortable to wear. The inspection window is fitted so that you can visually check the two indicators of the automatic valve are showing green and that the lifejacket is ready for use. Buoyancy 100N. Detachable crutch strap. The Compact is the lifejacket that you really want.

SIZE 30-110 kg

RIB HYBRID LIFEJACKET
TWO YEARS GUARANTEE

EN ISO 12402-3
EN ISO 12401



HYBRID 220
AUTO 1711 MAN 1701



HYBRID 220
AUTO 1710 MAN 1700

HYBRID 220

Hybrid 220 is a lifejacket which has 55N inherent buoyant material and a 165N inflatable lung. The Hybrid comes with automatic inflation or manual only inflation. Two ziped pockets, retro reflective patches and double crutch straps, integrated safety harness approved to EN ISO 12401.

SIZE 60-120 kg



HYBRID 220 PILOT AUTO ART NO 1731
HYBRID 220 PILOT MAN ART NO 1721



HYBRID 220 PILOT AUTO ART NO 1730
HYBRID 220 PILOT MAN ART NO 1720

HYBRID 220 PILOT

Similar features as the Hybrid 220 but without the integrated safety harness. There is also a window for an identity card on the left chest. Available fitted with manual or automatic gas inflation.

SIZE 60-120 kg

EMERGENCY SERVICES LIFEJACKETS
TWO YEARS GUARANTEE

EN ISO 12402-2



SIZE 40-150 kg

FIRE OFFICER
AUTO 2711 MAN 2721
FIRE
AUTO 2716 MAN 2726

FIRE

Emergency services lifejacket with an attachment D-ring at the back. Available in manual or automatic and fitted with reflective tape, whistle, lifting becket and crutch straps. Toggle to fit a sprayhood. Buoyancy 305N. Automatic cartridge art no 2520. CO₂ cylinder: 60 g art no 2460. Accessories: Sprayhood, lifejacket light.



SIZE 40-150 kg

POLICE OFFICER
AUTO 2712
POLICE
AUTO 2717

POLICE

Emergency services lifejacket with an attachment D-ring at the back. Available in manual or automatic and fitted with reflective tape, whistle, lifting becket and crutch straps. Toggle to fit a sprayhood. Buoyancy 305N. Automatic cartridge art no 2520. CO₂ cylinder: 60 g art no 2460. Accessories: Sprayhood, lifejacket light.

”VARIOUS VERSIONS OF PLB AND AIS DEVICES CAN BE FITTED INTO ALL OUR INFLATABLE LIFEJACKETS, FOR MORE INFORMATION PLEASE CONTACT US”



SIZE 40-150 kg

AMBULANCE OFFICER
AUTO 2713
AMBULANCE
AUTO 2718

AMBULANCE

Emergency services lifejacket with an attachment D-ring at the back. Available in manual or automatic and fitted with reflective tape, whistle, lifting becket and crutch straps. Toggle to fit a sprayhood. Buoyancy 305N. Automatic cartridge art no 2520. CO₂ cylinder: 60 g art no 2460. Accessories: Sprayhood, lifejacket light.



See page 12 for accessories and spare parts.

INDUSTRIAL BUOYANCY AID
TWO YEARS GUARANTEE

EN ISO 12402-5
EN ISO 12401



ART NO 5513

BALTIC PILOT

Manufactured by combining heavy duty materials, components and innovative design makes the Pilot the number 1 choice if you work on or near water.

Pilot features an integrated safety harness, universal attachment points on the shoulders, two crutch straps and two fleece-lined outer pockets. The Pilot also has lifting handles incorporated in the shoulder straps and retro reflective tape front and back to ensure all-round high visibility for night-work.

SIZE	M	L	XL
	50-70 kg	70-90 kg	90+ kg



ART NO 5516

SAR

SAR has more floatation material than a conventional 50N buoyancy aid, giving enhanced in-water freeboard. SAR is equipped with an integrated safety harness which has stainless steel attachment D-rings on the front and back, double crutch strap, two large fleece-lined pockets, one with a velcro closure and the other a zip. There are also two smaller divided pockets fitted on the chest area, one pocket has a whistle and the other pocket can be used, for example to attach a knife. SAR is a one-size buoyancy aid, adjusted by using the waistband and side adjusters for a snug fit. Fitted with retro-reflectors to provide high visibility and attachment points on the chest for emergency and VHF / radio.

SIZE	40+ kg
------	--------

INDUSTRIAL BUOYANCY AID
TWO YEARS GUARANTEE

EN ISO 12402-5



ART NO 5112

BALTIC WORKER

Worker is a robust buoyancy aid in our industrial program. The outer cover is manufactured using a PVC coated nylon which makes the vest resistant to UV-light, oil and mould. The Worker has three sturdy waistbands to ensure a comfortable fit, lifting handles in the shoulder straps and retro- reflective patches on the shoulders. One size fits from 40 -130 kg.

SIZE	40-130 kg
------	-----------

INDUSTRIAL FLOATATION CLOTHING
TWO YEARS GUARANTEE

EN ISO 12402-6
EN ISO 15027-1



AMAROK 5798



AMAROK 5792

HI-VIS

Same design and sizes as Amarok but with pockets on the knees to add cushioning protection if required. Approved to high visibility workwear standard EN ISO 20471.



HI-VIS 5791

FLOATATION SUITS

The floatation suit has a new much lighter and softer floatation material. Remains soft and comfortable to wear in very low temperatures. 100 % waterproof due to waterproof materials and taped seams. Fitted with exterior pockets, an inside pocket, a high collar and a hood that can be rolled into the collar. Internal braces for optimum fit and adjustable cuffs in the sleeves and legs. Approved to EN ISO 12402-6 and EN ISO 15027-1 thermal protection.

SIZE	XS	S	M	L	XL	XXL	XXXL
	50-60 kg	60-70 kg	70-80 kg	80-90 kg	90-100 kg	100+ kg	100++ kg

INDUSTRIAL FLOATATION CLOTHING
TWO YEARS GUARANTEE

EN ISO 12402-5
EN ISO 20471



ART NO 5470



ART NO 5170



THE DOCK-COMBINATION

Baltic Chest high trousers, in combination with our Dock flotation jacket provides a 100 % waterproof system giving buoyancy equivalent to a 50N buoyancy aid.

Robust and durable floatation clothing for working on or next to water.

BALTIC DOCK FLOATATION JACKET

The classic Dock an EN ISO approved floatation jacket has received a face lift with higher quality materials and a significantly better fit. The Dock was originally designed to be used exclusively in ports and on board vessels in commercial service. Since then it has quickly become a favourite on board pleasure boats because of its practicality. Waterproof, warm and lots of pockets, not forgetting the high visibility properties. New floatation material, new smoother exterior material and new features such as air vents under the arms, new softer and better reflective strips and a significantly better fit makes this the obvious choice of flotation jacket for both industry and the safety-conscious leisure boat owner. Approved to EN ISO 12402-5 and EN ISO 20471.

SIZE	XS	S	M	L	XL	XXL	XXXL
	50-60 kg	60-70 kg	70-80 kg	80-90 kg	90-100 kg	100+kg	100++kg

BALTIC CHEST HIGH TROUSERS

A chest high lined trouser manufactured in waterproof PU-coated nylon with taped seams, an ideal combination to wear with our Dock jacket. Features include two hand warmer pockets with outside cargo pockets, reinforced seat and knees plus fitted with retro reflective tape. The trousers also have adjustable shoulder straps and ankles with mesh drain bottoms. N.B. There are no buoyant properties in these trousers.

SIZE	XS	S	M	L	XL	XXL
------	----	---	---	---	----	-----

INDUSTRIAL FLOATATION CLOTHING
FIVE YEARS GUARANTEE

EN ISO 12402-6



150N BUOYANCY



IFLOAT 150 ART NO1697



IFLOAT 150 ART NO1698



IFLOAT 150 ART NO1699

50N BUOYANCY



IFLOAT 50 ART NO 5697



IFLOAT 50 ART NO 5698



IFLOAT 50 ART NO 5699

IFLOAT

iFloat is available in two versions, 50N and 150N buoyancy. The iFloat 50 is classified as a buoyancy aid and iFloat 150 is classified as a lifejacket. Both models are inflated via a gas cylinder that is activated by the manual pull-cord. The inflatable lung and the mouth inflation – deflation tube as well as the manual gas valve are the same as used in our other inflatable lifejackets. When you fall in the water, pull the iFLOAT lung out of the waist pouch place over your head and pull the manual inflation pull-cord. The gas then inflates the lung. Recommended for swimmers only.

SIZE	40-130 kg
------	-----------





M.E.D./SOLAS APPROVED LIFEJACKETS

APPROVED TO MSC 200 (80) 2010 REQUIREMENT

M.E.D./SOLAS FOAM MK3 ADULT
Equipped with retro reflective patches, buckle, whistle and lifting loop plus Buddy Line. The outer material is made of durable UV-reflective polyester with floatation material of laminated polyethylene foam. Tested and approved to The Life Saving Appliance requirements of Marine Equipment Directive (MED) 96/98/EC (latest edition), ANNEX A.1, item A.1/1.4 Tested according to the international standard IMO Res MSC.81 (70) with resolution MSC. 200 (80).



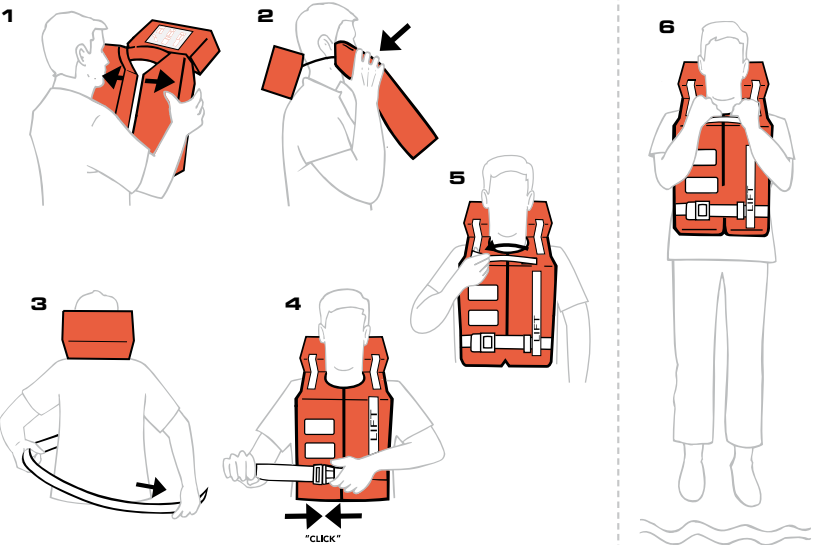
TECHNICAL SPECIFICATIONS
M.E.D./SOLAS FOAM MK3 ADULT
APPROVED TO MSC 200 (80) REQUIREMENT

Unfolded:	Folded:
Width: 270 mm	Width: 270 mm
Height: 160 mm	Height: 160 mm
Length: 580 mm	Length/depth: 400 mm
Buoyancy: 135N	
Weight: 0,72 kg	
Waistband length > 1750 mm	

SIZE	43 kg up
------	----------

ART NO 1050

DONNING INSTRUCTION ADULT
SOLAS FOAM MK3 43 KG UP



BALTIC M.E.D./SOLAS LIFEJACKETS

All of our industrial products as with our other products are tested and approved to the latest standards. We also conduct our own product tests to ensure that the products and components function perfectly. These tests have also included various lifejacket lights inwater, onboard and also in abandonment situations including evacuation chutes.

To ensure a maximum lifespan our M.E.D./SOLAS lifejackets are manufactured using only quality materials, this coupled with a compact design to take up the absolute minimum volume for stowage.

The Adult version has a waist belt that's girth exceeds 1750 mm as standard.

Laminated donning instructions are available in different sizes and can be supplied with the lifejackets.

The Infants version has been tested and designed for comfort manufactured using super soft floatation foam and incorporates a beaver tail crutch strap to ensure secure fit with maximum comfort.



TECHNICAL SPECIFICATIONS
M.E.D./SOLAS 2010 CHILD
APPROVED TO MSC 200 (80) REQUIREMENT

Similar to M.E.D./SOLAS 2010 Adult

Unfolded:	Folded 2 pcs:
Width: 270 mm	Width: 270 mm
Height: 80/100 mm	Height: 305 mm
Length: 500 mm	Depth: 320 mm
Buoyancy: 102N	
Weight: 0,55 kg	

SIZE	15-43 kg
------	----------

ART NO 1040



TECHNICAL SPECIFICATIONS
M.E.D./SOLAS 2010 INFANT
APPROVED TO MSC 200 (80) REQUIREMENT

Similar to M.E.D./SOLAS FOAM MK3 Adult but with super soft floatation foam.

Size:
Width: 110-280 mm
Height: 75-100 mm
Length: 470 mm
Buoyancy: 66N
Weight: 0,60 kg

SIZE	0-15 kg
------	---------

ART NO 1030



TECHNICAL SPECIFICATIONS
M.E.D./SOLAS 2010 INFANT STD
APPROVED TO MSC 200 (80) REQUIREMENT

Similar to M.E.D./SOLAS FOAM MK3 Adult

Size:
Width: 310 mm
Height: 110 mm
Length: 380 mm
Buoyancy: 73 N
Weight: 0,46 kg

SIZE	0-15 kg
------	---------

ART NO 1035

Laminated donning instructions are available separately. See page 12 for M.E.D./SOLAS light selection.

BALTIC INDUSTRIAL ACCESSORIES & SPARE PARTS
ALL COVERS APPROVED TO EN ISO 12402-8



**MOLTEN METAL SPLASH
PROOF COVER**
New design for better fit.
Fits all Baltic inflatable lifejackets.
The flame resistant material is soft,
pliable and does not reflect light from
welding or cutting tools.



PROTECTIVE COVER
New design for better fit.
Fits all Baltic inflatable lifejackets.
Durable material protects
your lifejacket from wear, oils and
sparks from the cutting tool.
ART NO 2521.



BALTIC WHISTLE
A safety orange non-clog
plastic whistle. CE- and
M.E.D./SOLAS approved.
ART NO 2508.



**BALTIC RETRO
REFLECTIVE KIT**
Two pieces of self adhesive
retro reflective tape. Peel off
backing sheet and apply to what-
ever you want. CE- and M.E.D./
SOLAS approved.
ART NO 2507.



**BALTIC CRUTCH
STRAP KIT 30MM**
A crutch strap kit for retro
fitting on all Baltic inflatable
lifejackets. Easy to fit and
adjust. Size One-size.
ART NO 2510.



LIFEJACKET LIGHT
M.E.D./SOLAS
ART NO 2401



RADIO POCKET
ART NO 2513



BALTIC SPRAYHOOD
New design for better fit. Designed
to fit neatly inside the collar of Baltic
inflatable lifejackets, a must to prevent
water and spray from entering the air-
ways. A unique stay system supports
the hood away from the face coupled
with ventilation to stop condensation
and keep CO₂-build-up below 2.5 %.
Fluorescent coloured back with clear
front to give excellent visibility. Fitted
with retro reflective, tested and appro-
ved to EN ISO 12402-8.



33 g cylinder with
safety indicators.
ART NO 2433



38 g cylinder with
safety indicators.
ART NO 2438



45 g cylinder
ART NO 2445



60 g cylinder with
safety indicators.
ART NO 2460



Safety indicators
Suitable for all Baltic
inflatable models
ART NO 2404



Bobbin Halkey
Roberts
ART NO 2406



Cartridge
United Moulders
ART NO 2520

**ALL INFLATABLE
LIFEJACKETS IN OUR
INDUSTRIAL/OFFSHORE
RANGE ARE EQUIPPED
WITH AN INSPECTION
WINDOW.**

Simplifying pre-wear inspection

Thanks to the window it is easy to check the status of the lifejacket without even opening the outer cover. OK for use if both indicators are green. Stop or check before use if either or both of the indicators are red. A red indicator shows that there could be a potential fault with the automatic cartridge or the cylinder installation.

For your safety and security it is important that at least annually your inflatable lifejackets are inspected by our trained and certified Baltic service stations in convenient World-wide locations.

At www.baltic.se you can find your nearest Baltic service station.



For extra security we fit cylinder retainers to all our inflatable life-jackets. The retainer prevents the cylinder working loose when subject to constant wear and vibration.



FUNCTION INFLATABLE LIFEJACKETS

How they operate

Inflatable lifejackets have an inflation valve either automatic or manual connected to an airtight bladder. To operate the manual valve you simply pull the toggle on the right hand side of the jacket downwards with a jerk and the bladder will start to inflate immediately. The automatic lifejacket will operate and inflate once it has been

immersed in water for three seconds. The automatic can be operated manually and both types can be inflated orally by the tube. The oral tube is used to deflate the lifejacket. N.B! After gas inflation the life-jacket must be rearmed. Inside the lifejacket you will find instructions as to which rearming kit to use. Instructions to complete the rearming procedure are included with our rearming kits.

BALTIC INFLATABLE LIFEJACKET



BALTIC INFLATABLE LIFEJACKET INFLATED



ANNUAL INSPECTION

Inflatable lifejackets require inspection regardless of whether they have been inflated or not. Failure to carry out the annual inspection may cause your inflatable lifejacket to malfunction! The annual inspection is best carried out by our accredited service stations, or

as an alternative you can perform a simplified inspection yourself. Instructions for this simplified self inspection and information of our accredited service stations are to be found on our web page: www.baltic.se

PRE-WEAR CHECK INFLATABLE LIFEJACKETS



Automatic valve



Every time you wear your inflatable lifejacket you should check the following:

1. Automatic valve

If the automatic valve indicators shows red in either window the lifejacket must be inspected or rearmed.

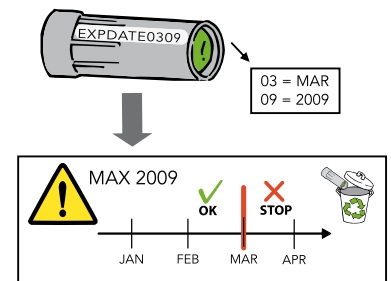
2. Check pull knob

Check that the manual inflation pull knob is accessible when donned.

REARMING INFLATABLE LIFEJACKETS

CONTROL OF EXPIRY DATES OF CARTRIDGES, DEFLATION AND RE-PACKING

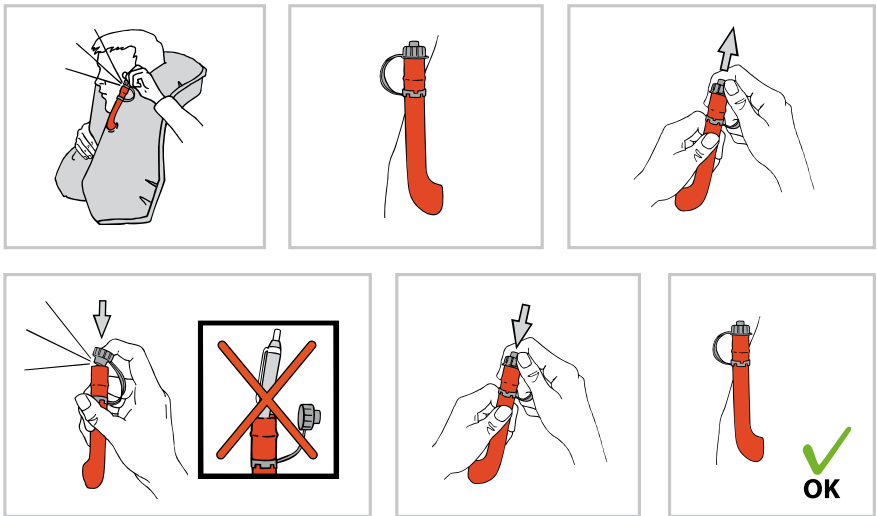
UNITED MOULDERS



UNITED MOULDERS CARTRIDGE

On the cartridge is printed the expiry date. E.G. **0309**, this would denote replace by March 2009.

DEFLATION OF AN INFLATED LIFEJACKET





BALTIC[®]

LIFEJACKETS SWEDEN

HEAD OFFICE

BALTIC SAFETY PRODUCTS AB

Box 60 • S-545 02 Älgårås • Sweden

Tel +46 (0)506 369 90

Fax +46 (0)506 401 96

info@baltic.se • www.baltic.se

BALTIC SAFETY PRODUCTS UK LTD

7 Compass Point • Ensign Way, Hamble

Hampshire SO31 4RA • United Kingdom

Tel +44 (0)23 8045 7272

Fax +44 (0)23 8045 4747

sales@baltic-uk.com • www.baltic.se



ISO 9001 Certified
Manufacturer of **M.E.D./SOLAS** approved products